

ENGINEERING  
PIPELINES  
STRUCTURES



## ABOUT US

**Finmechanical** is a company formed by professionals in the engineering and construction sector that counts with more than 40 years of experience in engineering, procurement, and construction at service of the hydrocarbons and COMMS industry.

We count with our equipment and highly specialized human resources to bring a solution to every specific requirement of our clients.

Our work team consists of professionals who have a great deal of proven experience by the execution of many high scale projects over the years.

Our experts are capable to develop small and high scale projects always achieving the highest quality standards and complying the current regulations.

We are a company willing to take on challenges in favor of the development of Mexico, where our Headquarter is located, but we also have offices in U.S.A. and Europe.

We are committed to reach excellence, and we care about certifying ourselves to provide a quality service.

## OUR CERTIFICATIONS

Our management system includes:

- ISO 9001:2015
- ISO 14001:2015
- ISO 45001:2018

WPS Certifications whit a personal of AWS certification for the SMAW, GTAW, GMAW welding processes and for the GTAW+SMAW process.

**Finmechanical**  
— Engineering / Pipelines / Structures —





## **MISSION**

To be a leading company provider of integral construction solutions for both our public and private sector customers, complying with the quality and HSE requirements, working with qualified personnel to contribute to the economic development of the world's energy industry, while generating benefits to society.

## **VISION**

Be the company of choice for the development of the most transcendental projects, performing our activities with the highest international standards within our Quality and HSE management systems, providing optimal solutions to exceed the expectations of our National and International customers.

## **OUR VALUES**

The convictions that guide our conduct:

- Legality
- Integrity
- Leadership
- Teamwork
- Ambiental Protection and Safety

## QUALITY AND HSE POLITICS

**Finmechanical** has always been committed to its projects, constantly seeking to improve the quality and performance of its products and services to satisfy its customers, while meeting the specific requirements of each project.

**To this end, audits of the company's internal processes are carried out on an ongoing basis, including:**

- **Training:** we are committed to the continuous improvement of Quality, Environmental and Safety Policies with staff from all sectors and all levels, in particular those with high responsibility positions.
- **Organization:** defines the objectives and scope of all Quality, Safety, Health and Environmental Policies.
- **Implementation:** Development of the necessary tools to achieve the objectives with an integrated corporate vision and a correct balance in all the aspects that contribute to the design of the strategies of the company.

## ENGINEERING AND PROCUREMENT

Our services include feasibility studies, generation of preliminary projects, detailed engineering design, assistance in the procurement, and consultancy in the disciplines of mechanical and civil engineering.

We also provide specialized services in the following disciplines:

- Processes: P&ID, PFD, material and energy balances, hydraulic calculations, datasheets, process risk analysis, specifications.
- Mechanical: mixed SMAW, GMAW, GTAW, FCAW welding by orbital welding machine for larger or smaller diameters, calculation reports, static and dynamic equipment, pressure vessels, storage tanks, distillation towers.
- Civil and Structural design: structural calculation reports, foundation design, architectural projects, traffic engineering, topography, hydrological & geotechnical studies.
- Pipes and flexibility: digital mockups, material specification, flexibility analysis, Isometrics, materials lists.
- Electrical, Instrumentation, and Control: short circuit memories, one-line diagrams, wiring boards, datasheets, specifications.
- Comms: SCADA systems, CCTV.





## CONSTRUCTION

**Finmechanical** is involved in construction in many areas of the energy industry, including:

- **Hydrocarbons:** Pipelines, compression stations, liquefaction plants, collection and shipping lines, producing wells, and access roads.
- **Electrical:** Combined cycle, substations, transmission and interconnection networks.
- **Petrochemical:** processes, reconfigurations, and extensions.
- **Mining:** extensions, maintenance, conservation, restoration.
- **Hydraulics:** pumping plants, wastewater treatment plants, and aqueducts.
- **Energy:** Thermoelectric, hydroelectric, wind, photovoltaic.
- **Urbanization:** Roads, airports, hospitals, government offices, supply centers.
- **Building:** Industrial, residential, commercial, and services.

## RESOURCES

- Logistics and machinery ready for the immediate start of any job.
- Production inspection systems carried out by approved and certified personnel.
- Procedures for work, production, and inspection controls.
- We have all the tools for the PWT automatic welding.

## **MULTIDISCIPLINARY SERVICES - CONSTRUCTION SUPERVISION - CONSTRUCTION CONTROL**

Our workforce is made up of multidisciplinary professionals– with extensive experience in project supervision, we have experts on each discipline, and we are able to generate optimal solutions for our clients, making your projects our commitment, with trained personnel to develop and exceed all expectation, always in an ethical and responsible manner with all those involved.

Our services cover the following areas:

- Civil Works Supervision
- Mechanical Work Supervision
- Industrial Safety Supervision
- Environmental Supervision
- Quality Control Supervision
- Welding Inspection

The specific objective of Finmechanical supervision work is to control the fulfillment of the conditions established in the work contracts signed between the client and the contractors, prioritizing the quality of the work.

We give a precise follow-up to the construction of the work according to the executive project, giving the necessary recommendations for the proper fulfillment of national and international standards, and at the same time carry out a rigorous financial control of the various contractors designated by the client, evaluating the workforce, monitoring the work program and verifying the safety on site.



## **CONSTRUCTION SUPERVISION**

Supervision includes both field and office activities. It is important to ensure that our observations are preventive, so that the work schedule is not affected by corrections in accordance with what is established in the budget and in the contracted work execution programs, the general and specific technical specifications and other annexes of the contract.

## **GENERATE INFORMATION**

We support our observations with photo reports, progress reports and work follow-up. We take care of the smallest details when it comes to controlling supplies, equipment and labor. We maintain strict financial control of the works carried out and prepare periodic reports comparing the planned and the executed works.

Our staff is trained to prepare effective log notes, avoiding leaving open issues and ambiguities.

We deliver to our clients a file that includes the preliminary project, bidding process, all the information generated in the execution process such as estimates, log notes, laboratory tests and quality control, as well as the closing documents, total settlement and surety documents.





























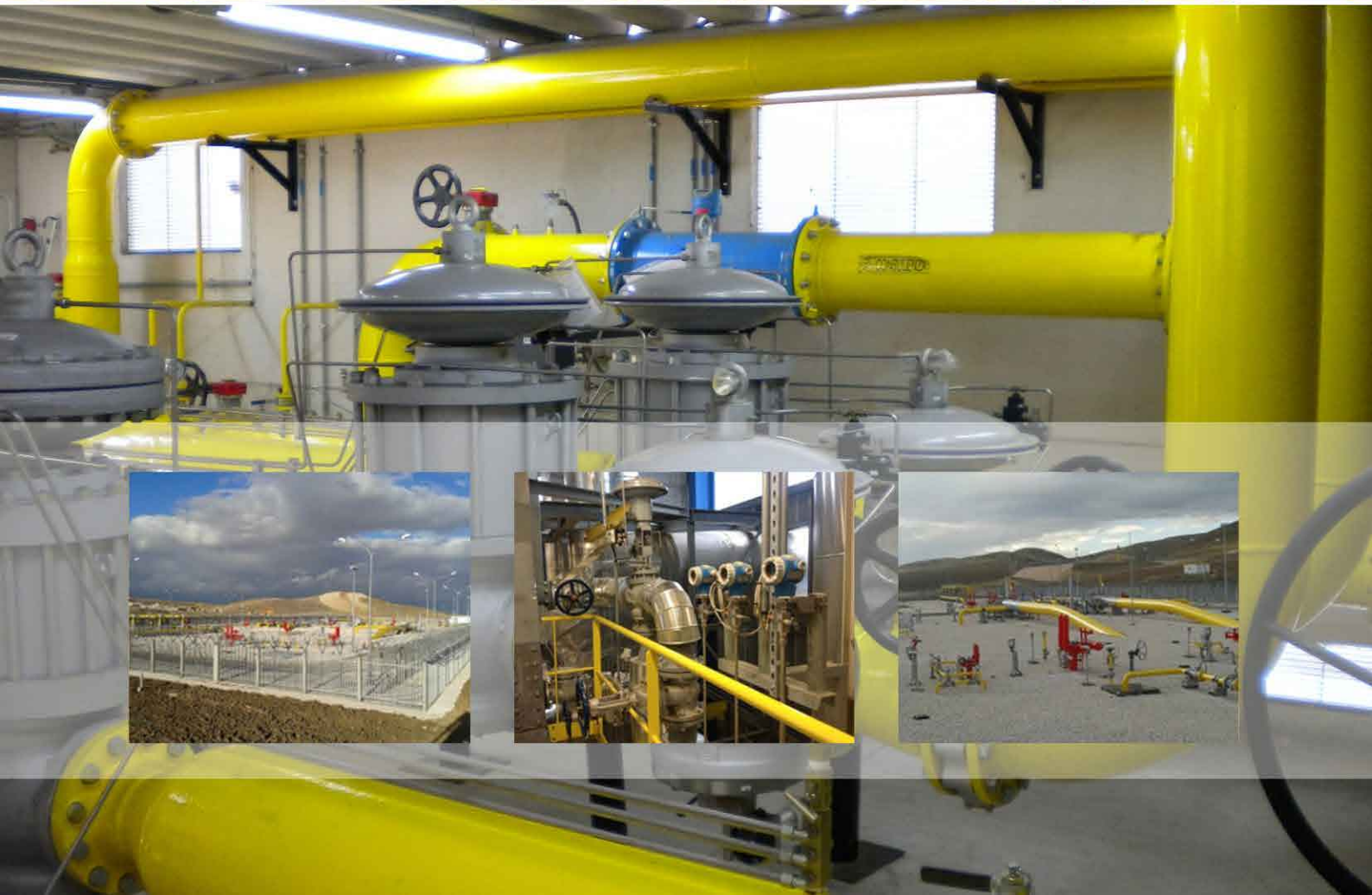
















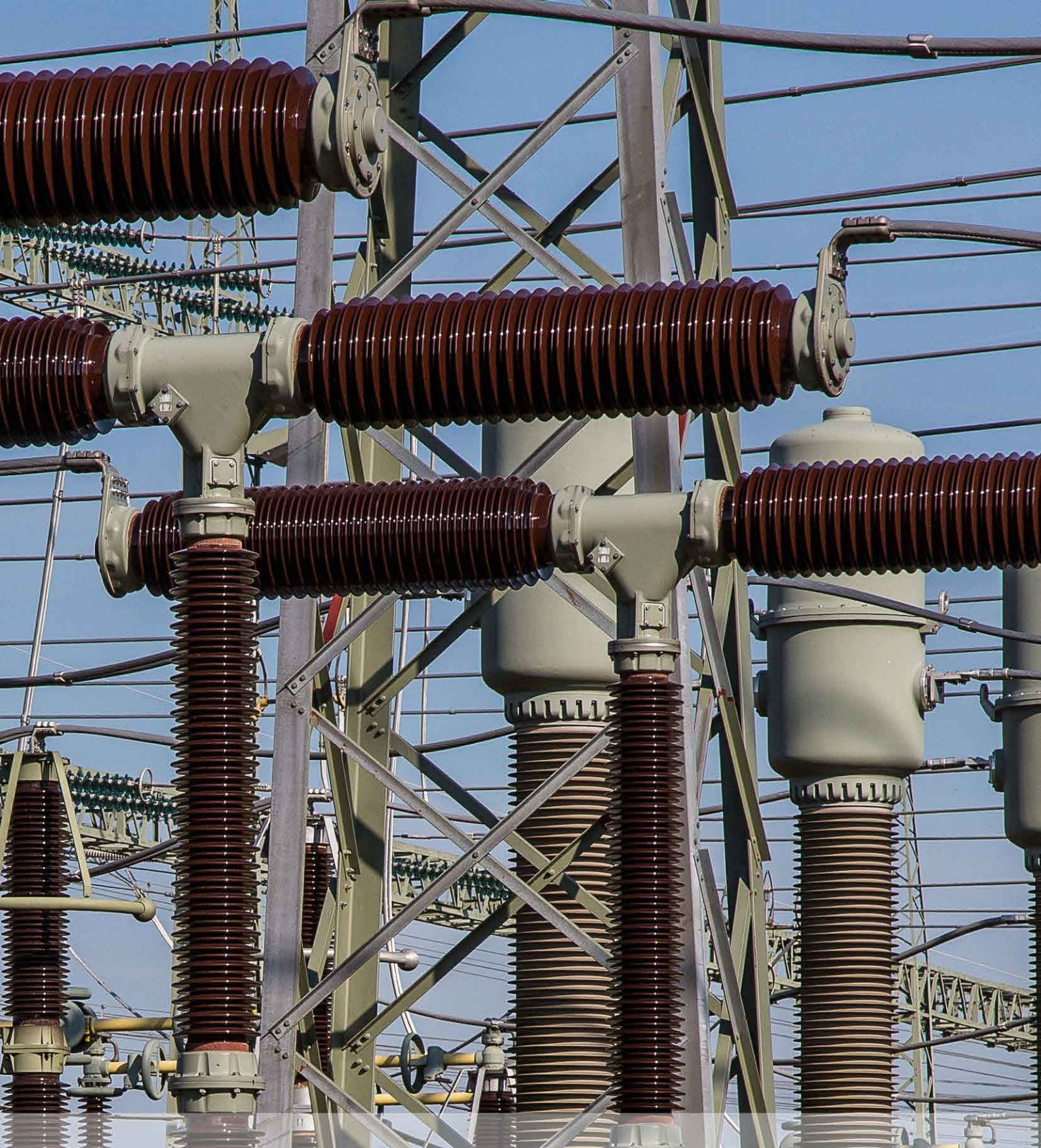
Nur öffnen wenn Spannungsfrei  
Open only when voltage is off  
Seulement ouvrir si l'éclairciment est éteint

fernbedienung  
remote control  
& distance

KV-2226

mauma CE







# Finmechanical

— Engineering / Pipelines / Structures —



graphic project:  elegantmultimedia.com

[www.finmechanical.com](http://www.finmechanical.com)

